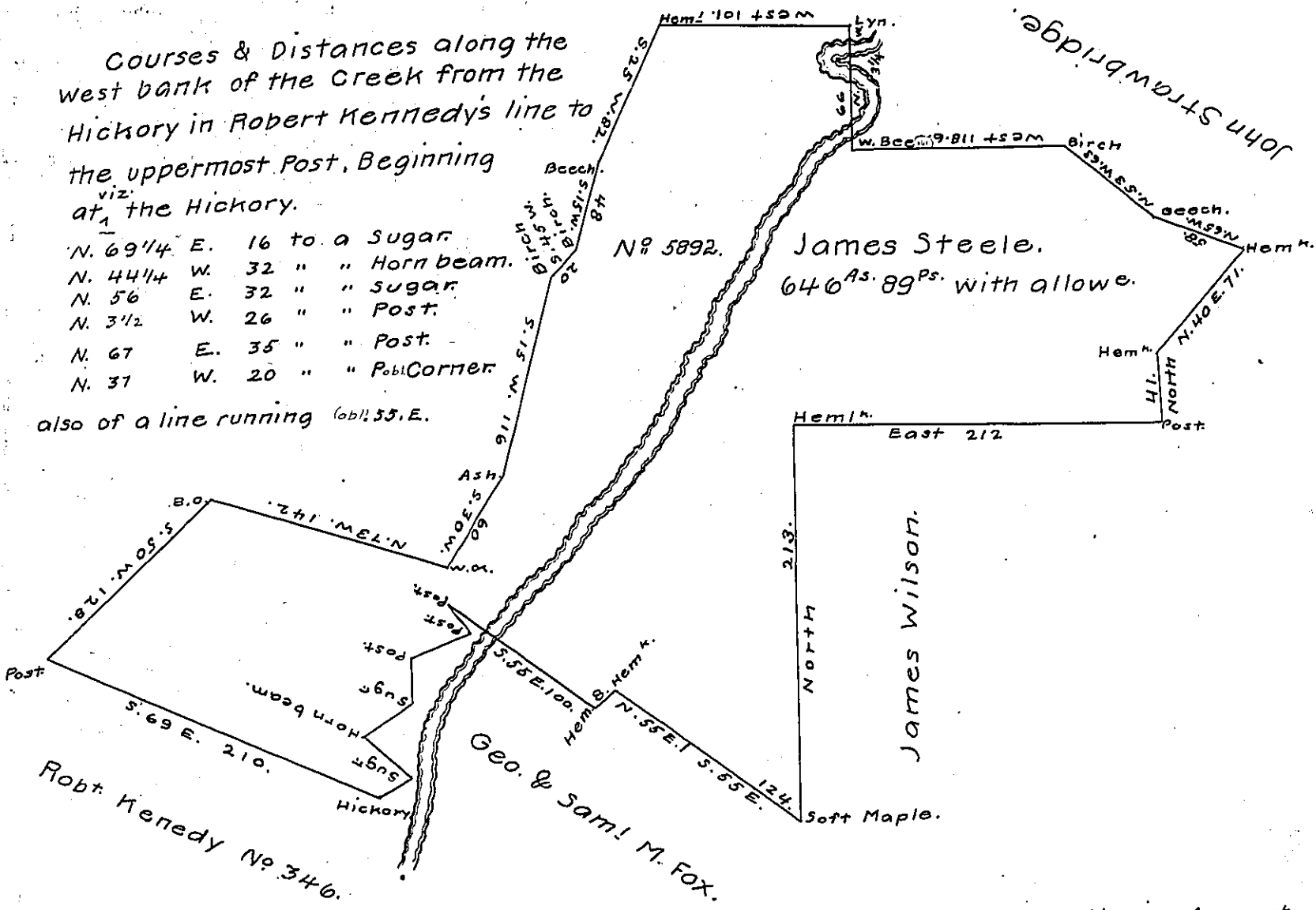


FORM NO. 1.

Courses & Distances along the West bank of the Creek from the Hickory in Robert Kennedy's line to the uppermost Post, Beginning at the Hickory.

- N. 69 1/4 E. 16 to a Sugar
- N. 44 1/4 W. 32 " " Horn beam.
- N. 56 E. 32 " " Sugar.
- N. 3 1/2 W. 26 " " Post.
- N. 67 E. 35 " " Post.
- N. 37 W. 20 " " Post Corner

also of a line running (ob) 35 E.



surveyed the above described tract of land, partly in August

1808 and the remaining unfinished part in May 1809 in pursuance of a Warrant granted to James Steele bearing date the 13th day of December 1804 and numbered as in the attached plot of the Survey 5892 Situate adjoining lands of Robert Kennedy on the South and lands of George & Saml M. Fox on the South & East and James Wilson & others on a water called the third fork of Pine Creek or Marsh Stream in Tioga County containing Six hundred and forty Six Acres and eighty nine perches and the usual allowance of six per cent for Roads &c.

Andrew Porter, Esquire,
Surveyor General.

Wm. Wilson, D.S.
John Norris, D.S.

In Testimony that the foregoing is a copy of the original remaining filed in the Surveyor General's Office, I have hereunto set my hand and the seal of said Office at Harrisburg the 15th day of January 1813,



Andrew Porter, S.G.

IN TESTIMONY that the above is a copy of the original remaining on file in the Department of Internal Affairs of Pennsylvania, made conformably to an Act of Assembly approved the 16th day of February 1833, I have hereunto set my hand and caused the Seal of said Department to be affixed at Harrisburg, this sixteenth day of May, 1907.

Henry Hoover
Secretary of Internal Affairs.